



The Most Accurate Whipstock Orientation

WHIPSTOCK PLACEMENT SERVICES

40 *gyrodata*
YEARS OF INNOVATION

MARKET + APPLICATIONS

Gyrodata provides an unparalleled combination of services to ensure your whipstock is placed and oriented in the best possible section of the wellbore. We can partner with any whipstock provider, chosen even acting as the agent for turnkey operations. We can provide a combination MicroGuide and radial cement bond log to ensure the whipstock is not located in a tortuous area and that the cement quality behind the casing is adequate to support the casing exit. We have the ability to set the appropriate bridge plug necessary to place the whipstock where you choose. Add all of this to the industry-leading orientation services traditionally associated with the Gyrodata name and you have an unbeatable package. We offer additional services including gyro while drilling (GWD), and real-time reactive toolface monitored gyro steering.

MICROGUIDE PROVIDES HIGH-RESOLUTION TORTUOSITY LOGS

- Tortuous areas can cause whipstock to not set properly
- High-resolution logs provide better management of torque, drag, and sticking of directional equipment and motors
- Identifies tortuous areas that can affect proper weight transfer

WELL INTEGRITY LOG

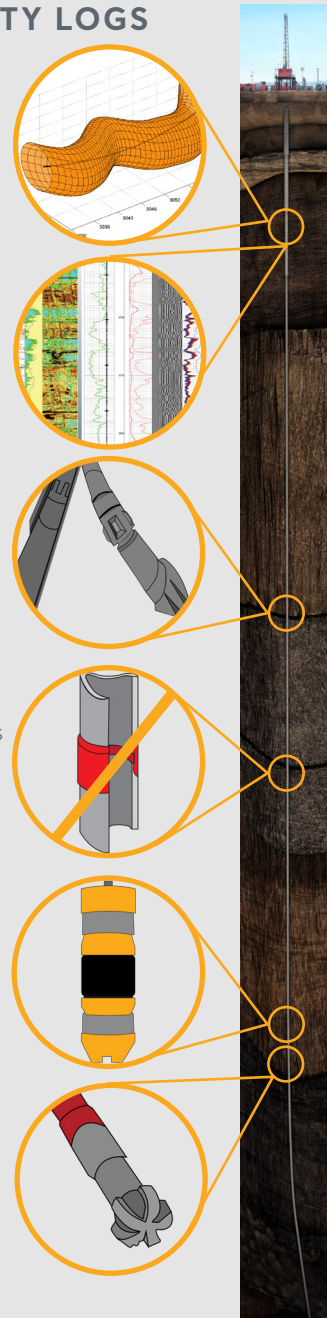
- Radial cement bond log ensures the kickoff is in area that has high-quality cement and formation adhesion
- Casing collar locator and gamma ray provide proper depth correlation and identify the location of the collar joint, which is difficult to mill through, to ensure whipstock is not set in a collar

PLUG SETTING SERVICES

- Set appropriate bridge plug necessary for mechanical whipstock operations

GYRO ORIENTATION AND STEERING SERVICES

- Highly accurate toolface orientation services to orient whipstock
- Real-time reactive toolface monitoring for steer/drill out operations
- Solid-state Quest GWD delivers the industry's most accurate measurements in a package that can withstand harsher downhole conditions



WHIPSTOCK PLACEMENT SERVICES